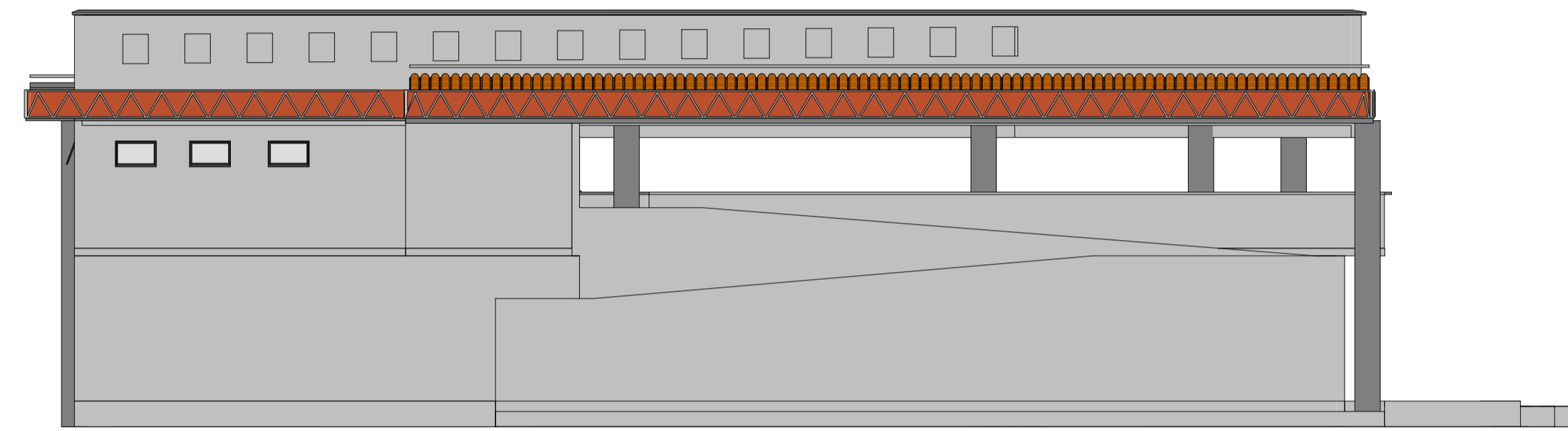
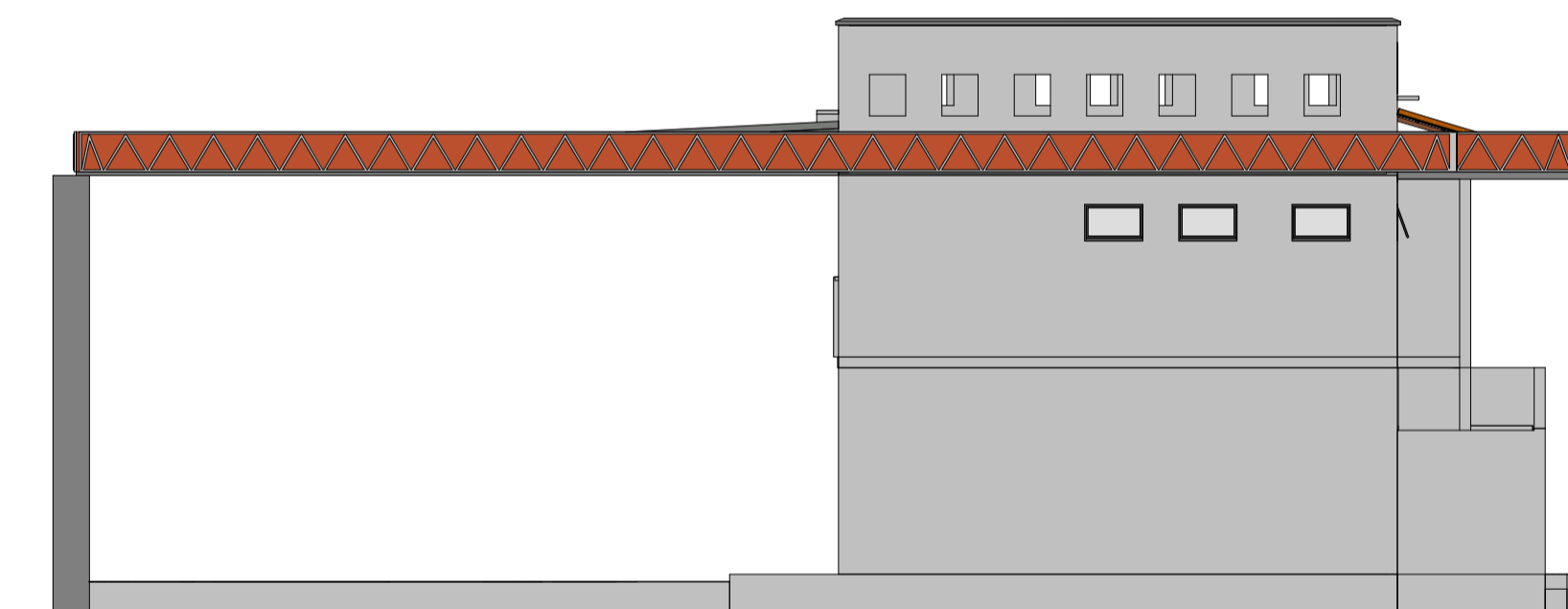


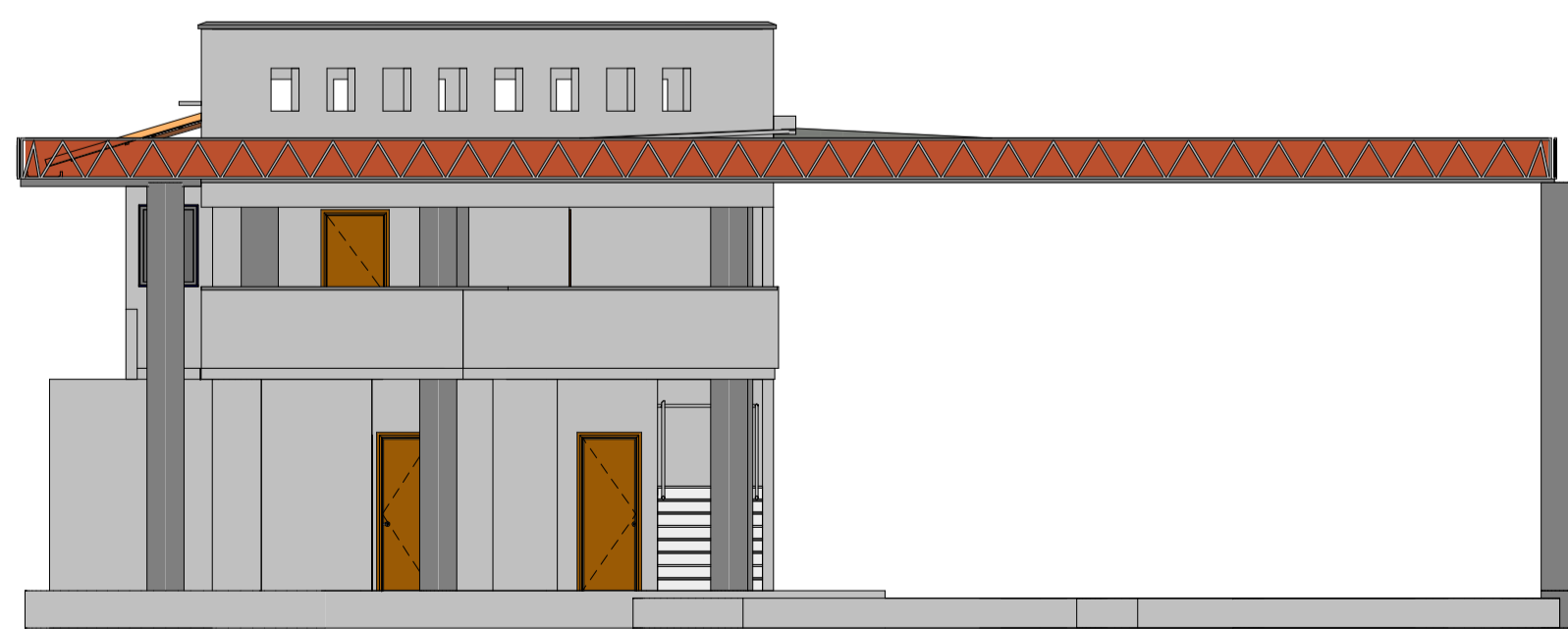
7 FACHADA SUL
ESCALA 1:100



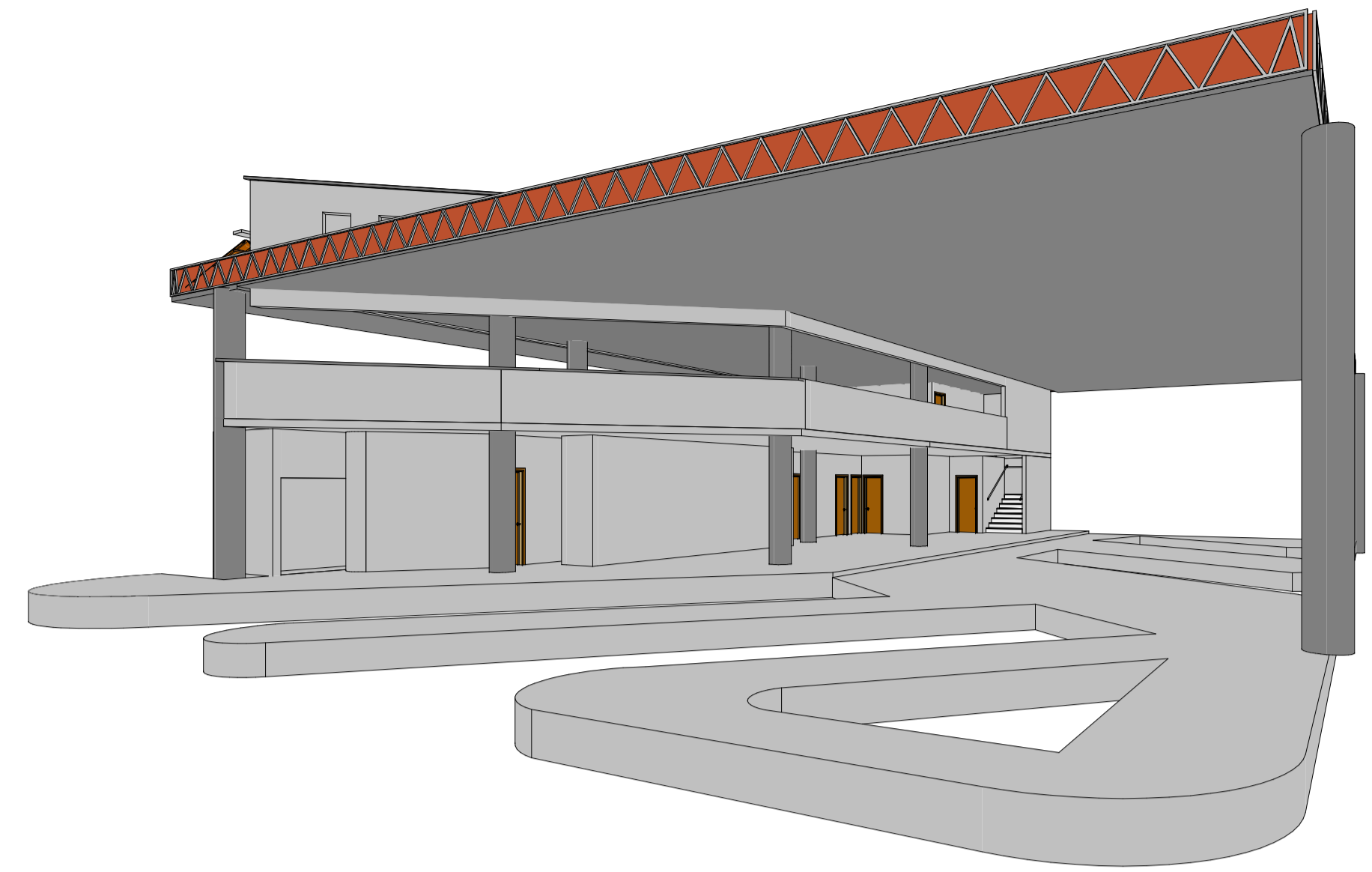
8 FACHADA NORTE
ESCALA 1:100



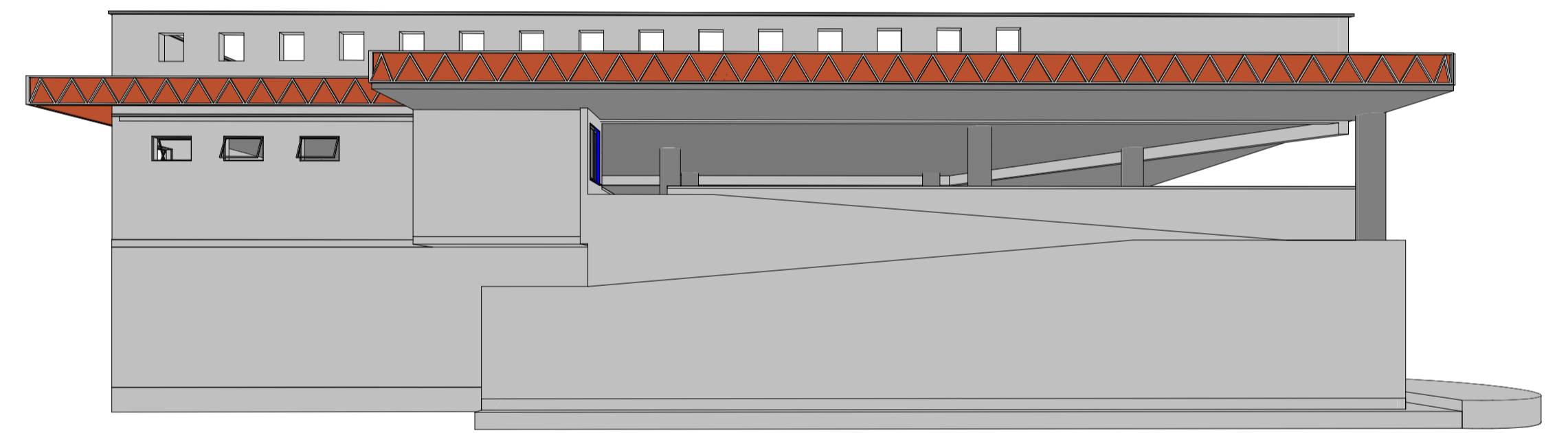
9 FACHADA LESTE
ESCALA 1:100



10 FACHADA OESTE
ESCALA 1:100



11 Perspectiva 3D - 01
ESCALA



12 Perspectiva 3D - 02
ESCALA



NORTEPLAN - ENGENHARIA E CONSULTORIA

CLIENTE:		PREFEITURA MUNICIPAL DE SÃO MIGUEL DA BAIXA GRANDE			
PROJETO:	REFORMA DA RODAVIÁRIA	LOCAL:	Av. João Teixeira, São Miguel da Baixa Grande - PI		
DESCRIÇÃO:	FACHADAS, PERSPECTIVAS 3D	ART:			
PROJETISTA:	CONVÊNIO Nº	ESCALA:	1:100		
Claudio Magro da Lima Melo Engenheiro Civil RN 151195380/CREA-PI	DADOS DE CAMPO:	DESENHO:	FORMATO:	REV.:	DATA:
JESUS SOUSA	ARG.SHELDON	A1	00	FEV/2022	FRANCHA Nº P4 05